



IMMEDIATE

RELEASE:

FOR INFORMATION CONTACT:

Thomas H. Bostwick

410-887-3196

September 9, 2025

MEDIA ADVISORY

Baltimore County Council Proposes Map Amendment to Bill 55-25

Towson, MD – Members of the Baltimore County Council announced today they have proposed an amendment to the Council’s redistricting legislation in Bill 55-25.

On August 4, 2025, the County Council introduced Bill 55-25 to redistrict the current seven Council districts into nine, following approval of the 2024 ballot question expanding the County Council from seven to nine districts, the submission of recommendations from the 2025 Redistricting Commission, and the Council’s Public Hearing on Redistricting on July 8, 2025.

As many west-side advocates requested at the Council’s July 8th Public Hearing, Bill 55-25 and its proposed map established two strong, majority-African American districts centered around the Woodlawn and Randallstown communities, respectively. The map also unified Essex, Middle River, and the waterfront communities in one district.

Since the introduction of Bill 55-25, the Council has heard from many residents that wish to see a third majority-minority district on the west-side, as recommended by the 2025 Redistricting Commission. The Council has also heard from residents on the east-side that wish to maintain the Essex-Middle River waterfront district. Accordingly, the proposed map amendment submitted by Councilman Izzy Patoka and Council Chairman Mike Ertel establishes a third majority-minority district (also known as a “BIPOC” district) on the County’s West Side. This new district has a Black Voting Age Population of 45.21% and a white Voting Age Population of 43.99%. In addition, the proposed map amendment maintains two strong, majority-African American districts that have 55.12% and 55.03% Black Voting Age Populations, respectively.

The Council will receive public comment on Bill 55-25 and the proposed map amendment at the Council’s Work Session this afternoon at 4:00 p.m. The public may also submit written testimony to the County Council at any time via e-mail at countycouncil@baltimorecountymd.gov. Final adoption of the County Council’s redistricting plan is currently scheduled during the Legislative Session on September 15, 2025 at 6:00 p.m.

To assist the public, the County Council’s proposed map is also available in an interactive version. To view the interactive map, scan the QR Code on this page or visit this website.

<https://experience.arcgis.com/experience/d02f1f6ff47a4e3c9366a927fb901a73>



All information regarding the 2025 Baltimore County councilmanic redistricting process may be found at <https://countycouncil.baltimorecountymd.gov/redistricting/>. For any other information, please visit the Council’s website or contact the County Council at 410-887-3196.

###

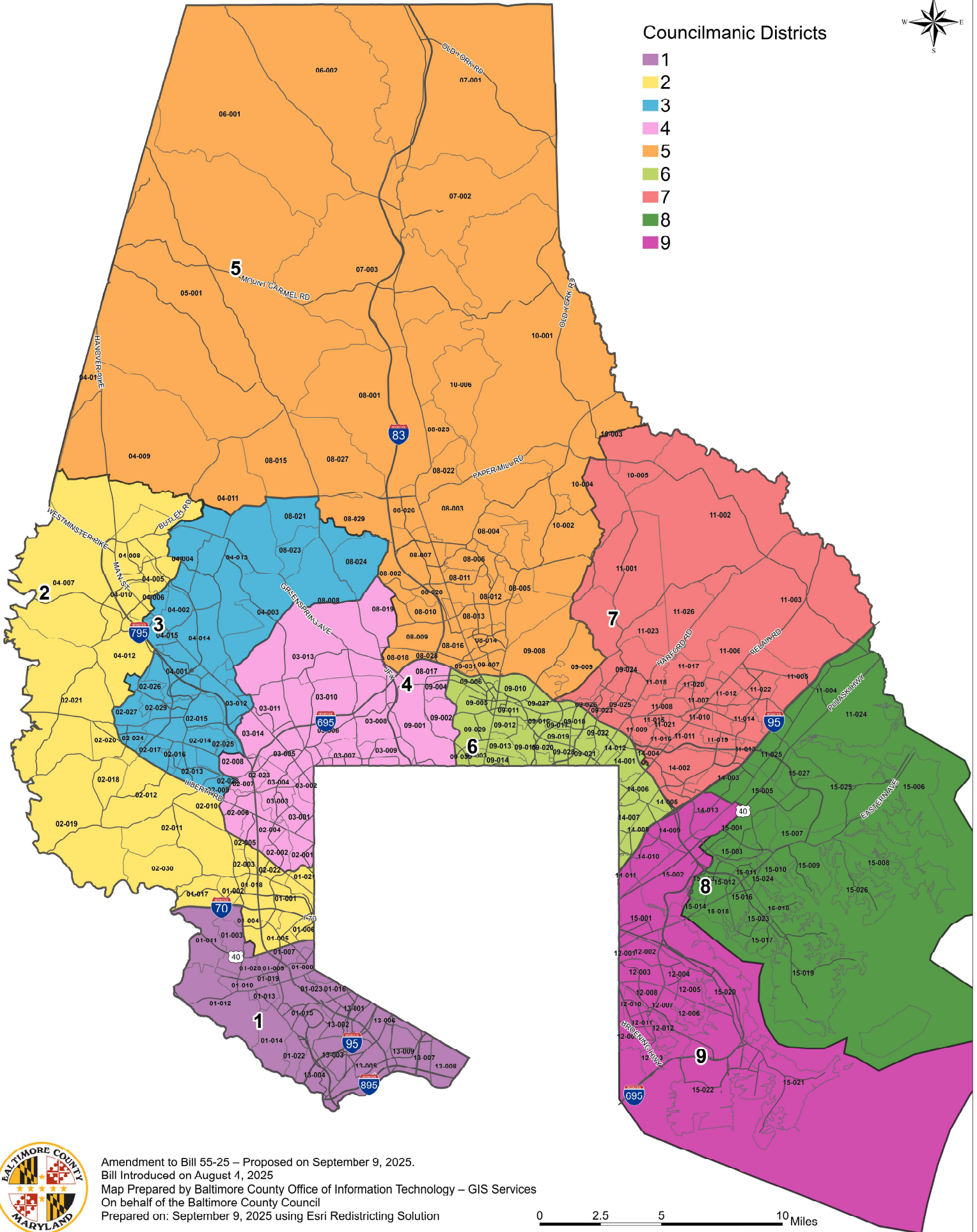
Proposed Map Amendment

Bill 55-25 - Exhibit A - Proposed 2026 Councilmanic Districts



Councilmanic Districts

- 1
- 2
- 3
- 4
- 5
- 6
- 7
- 8
- 9



Amendment to Bill 55-25 – Proposed on September 9, 2025.
 Bill Introduced on August 4, 2025
 Map Prepared by Baltimore County Office of Information Technology – GIS Services
 On behalf of the Baltimore County Council
 Prepared on: September 9, 2025 using Esri Redistricting Solution

0 2.5 5 10 Miles

PROPOSED 2026 BALTIMORE COUNTY COUNCILMANIC DISTRICTS

POPULATION & DEMOGRAPHIC SUMMARY

Prepared on September 9, 2025 Using Data From Esri Redistricting Solution and the Maryland Department of Planning

Maryland Adjusted Total Population & Demographic Summary

Council District	Total Population	Mean District Population	Deviation from Mean	Deviation Percent	White	Black or African American	Hispanic or Latino	Asian	Two or More Races	Other Race	Am. Indian or Alaska Native	Nat. Hawaiian or Other Pac. Islander
1	90,196	95,186	-4,990	-5.24%	52,224	15,384	7,654	9,789	4,463	498	159	25
2	90,143	95,186	-5,043	-5.30%	21,549	50,316	7,272	6,907	3,284	624	170	21
3	90,165	95,186	-5,021	-5.27%	23,769	50,956	6,806	4,854	3,127	540	93	20
4	90,564	95,186	-4,622	-4.86%	39,364	40,267	4,284	3,079	2,866	537	145	22
5	99,367	95,186	4,181	4.39%	74,150	6,932	6,037	8,030	3,612	430	135	41
6	99,579	95,186	4,393	4.62%	54,963	28,480	6,164	5,094	4,155	495	194	34
7	97,974	95,186	2,788	2.93%	64,017	15,467	3,989	9,984	3,966	381	130	40
8	99,045	95,186	3,859	4.05%	54,092	28,193	7,061	3,714	5,063	530	365	27
9	99,640	95,186	4,454	4.68%	59,767	18,142	12,267	3,260	5,164	453	565	22
Total	856,673				443,895	254,137	61,534	54,711	35,700	4,488	1,956	252

		Council District	White	Black or African American	Hispanic or Latino	Asian	Two or More Races	Other Race	Am. Indian or Alaska Native	Nat. Hawaiian or Other Pac. Islander
Mean District Population	95,186	1	57.90%	17.06%	8.49%	10.85%	4.95%	0.55%	0.18%	0.03%
Mean Deviation	3,389	2	23.91%	55.82%	8.07%	7.66%	3.64%	0.69%	0.19%	0.02%
Mean Deviation Percent	3.56%	3	26.36%	56.51%	7.55%	5.38%	3.47%	0.60%	0.10%	0.02%
Largest Actual District	99,640	4	43.47%	44.46%	4.73%	3.40%	3.16%	0.59%	0.16%	0.02%
Smallest Actual District	90,143	5	74.62%	6.98%	6.08%	8.08%	3.64%	0.43%	0.14%	0.04%
Overall Actual Deviation	9,497	6	55.20%	28.60%	6.19%	5.12%	4.17%	0.50%	0.19%	0.03%
Overall Actual Deviation Percent	9.98%	7	65.34%	15.79%	4.07%	10.19%	4.05%	0.39%	0.13%	0.04%
		8	54.61%	28.46%	7.13%	3.75%	5.11%	0.54%	0.37%	0.03%
		9	59.98%	18.21%	12.31%	3.27%	5.18%	0.45%	0.57%	0.02%
		Total	51.82%	29.67%	7.18%	6.39%	4.17%	0.52%	0.23%	0.03%

Maryland Adjusted Voting Age Population & Demographic Summary

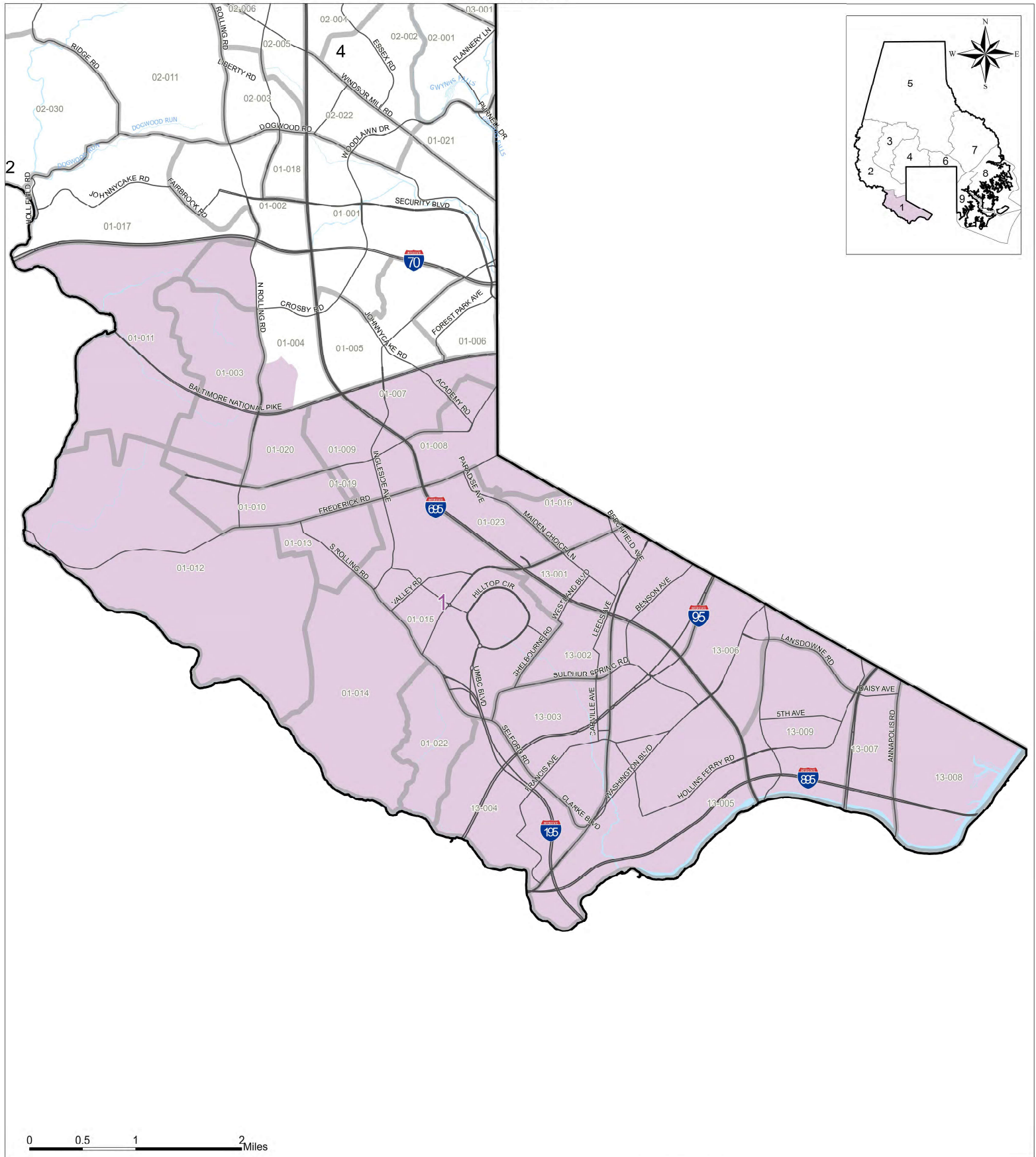
Council District	Total Population	Mean District Population	Deviation from Mean	Deviation Percent	White	Black or African American	Hispanic or Latino	Asian	Two or More Races	Other Race	Am. Indian or Alaska Native	Nat. Hawaiian or Other Pac. Islander
1	70,900	74,627	-3,727	-4.99%	43,523	11,829	4,995	7,370	2,723	311	125	24
2	69,913	74,627	-4,714	-6.32%	18,686	38,533	4,787	5,230	2,145	404	114	14
3	70,554	74,627	-4,073	-5.46%	20,754	38,823	4,562	3,887	2,048	391	74	15
4	70,827	74,627	-3,800	-5.09%	31,156	32,019	2,845	2,447	1,865	352	124	19
5	78,451	74,627	3,824	5.12%	60,713	5,142	3,945	6,096	2,120	294	104	37
6	80,268	74,627	5,641	7.56%	46,637	21,899	4,401	4,206	2,600	338	165	22
7	77,199	74,627	2,572	3.45%	53,326	10,915	2,607	7,645	2,291	271	110	34
8	76,456	74,627	1,829	2.45%	45,831	19,621	4,421	2,840	3,064	351	309	19
9	77,077	74,627	2,450	3.28%	49,572	13,444	7,668	2,525	3,133	261	455	19
Total	671,645				370,198	192,225	40,231	42,246	21,989	2,973	1,580	203

		Council District	White	Black or African American	Hispanic or Latino	Asian	Two or More Races	Other Race	Am. Indian or Alaska Native	Nat. Hawaiian or Other Pac. Islander
		1	61.39%	16.68%	7.05%	10.39%	3.84%	0.44%	0.18%	0.03%
		2	26.73%	55.12%	6.85%	7.48%	3.07%	0.58%	0.16%	0.02%
Mean District Population	74,627	3	29.42%	55.03%	6.47%	5.51%	2.90%	0.55%	0.10%	0.02%
Largest Actual District	80,268	4	43.99%	45.21%	4.02%	3.45%	2.63%	0.50%	0.18%	0.03%
Smallest Actual District	69,913	5	77.39%	6.55%	5.03%	7.77%	2.70%	0.37%	0.13%	0.05%
Overall Actual Deviation	10,355	6	58.10%	27.28%	5.48%	5.24%	3.24%	0.42%	0.21%	0.03%
Overall Actual Deviation Percent	13.88%	7	69.08%	14.14%	3.38%	9.90%	2.97%	0.35%	0.14%	0.04%
		8	59.94%	25.66%	5.78%	3.71%	4.01%	0.46%	0.40%	0.02%
		9	64.31%	17.44%	9.95%	3.28%	4.06%	0.34%	0.59%	0.02%
		Total	55.12%	28.62%	5.99%	6.29%	3.27%	0.44%	0.24%	0.03%

Proposed Map Amendment

Bill 55-25 - Proposed 2026 Councilmanic Districts

District 1



LEGEND

- Major Roadways
- Voter Precinct
- 00-000 Precinct Number
- Councilmanic District 1

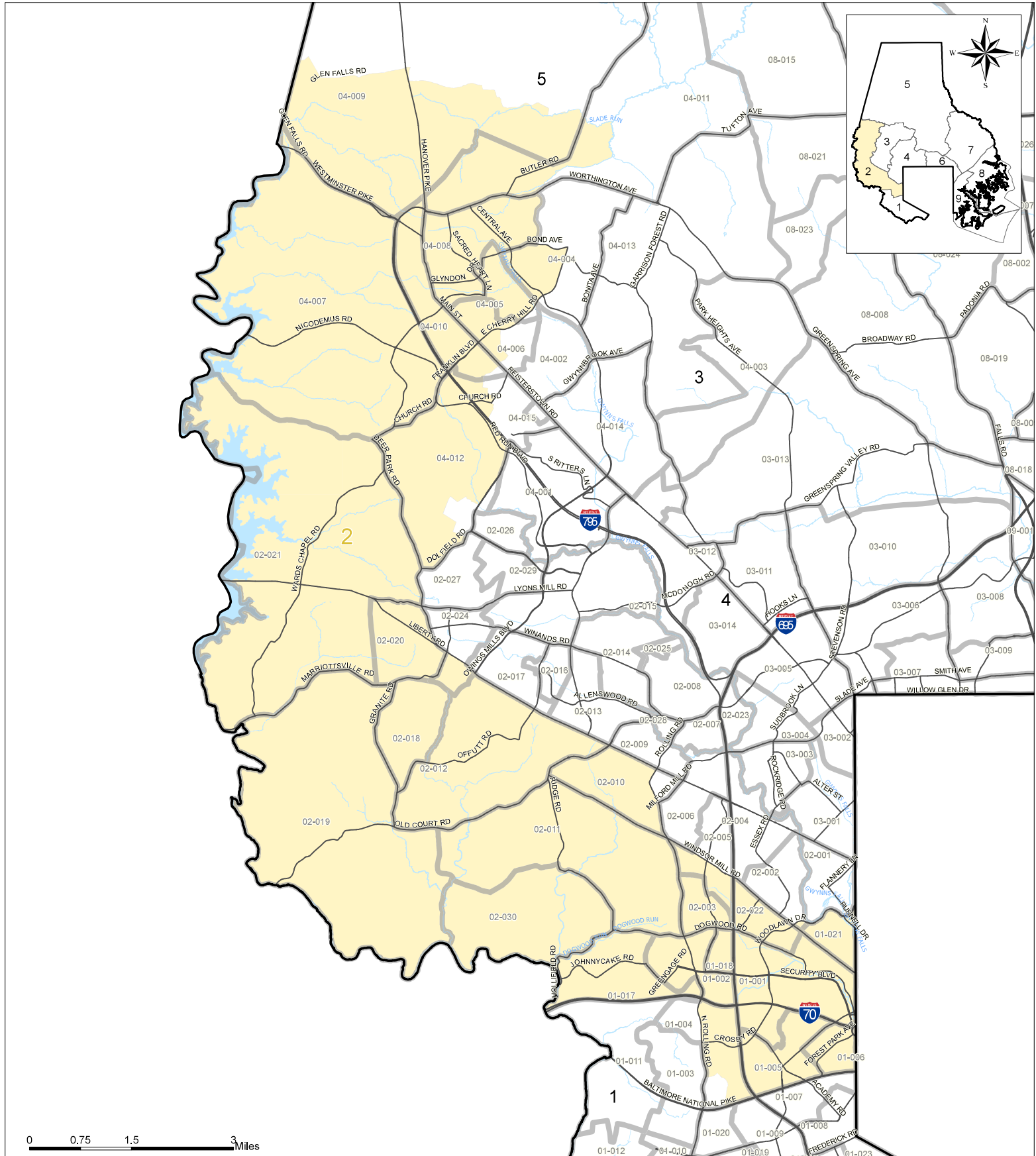
Amendment to Bill 55-25 – Proposed on September 9, 2025.
 Bill Introduced on August 4, 2025
 Map Prepared by Baltimore County Office of Information Technology – GIS Services
 On behalf of the Baltimore County Council
 Prepared on: September 9, 2025 using Esri Redistricting Solution



Proposed Map Amendment

Bill 55-25 - Proposed 2026 Councilmanic Districts

District 2



LEGEND

- Major Roadways
- Voter Precinct
- Precinct Number
- Councilmanic District 2

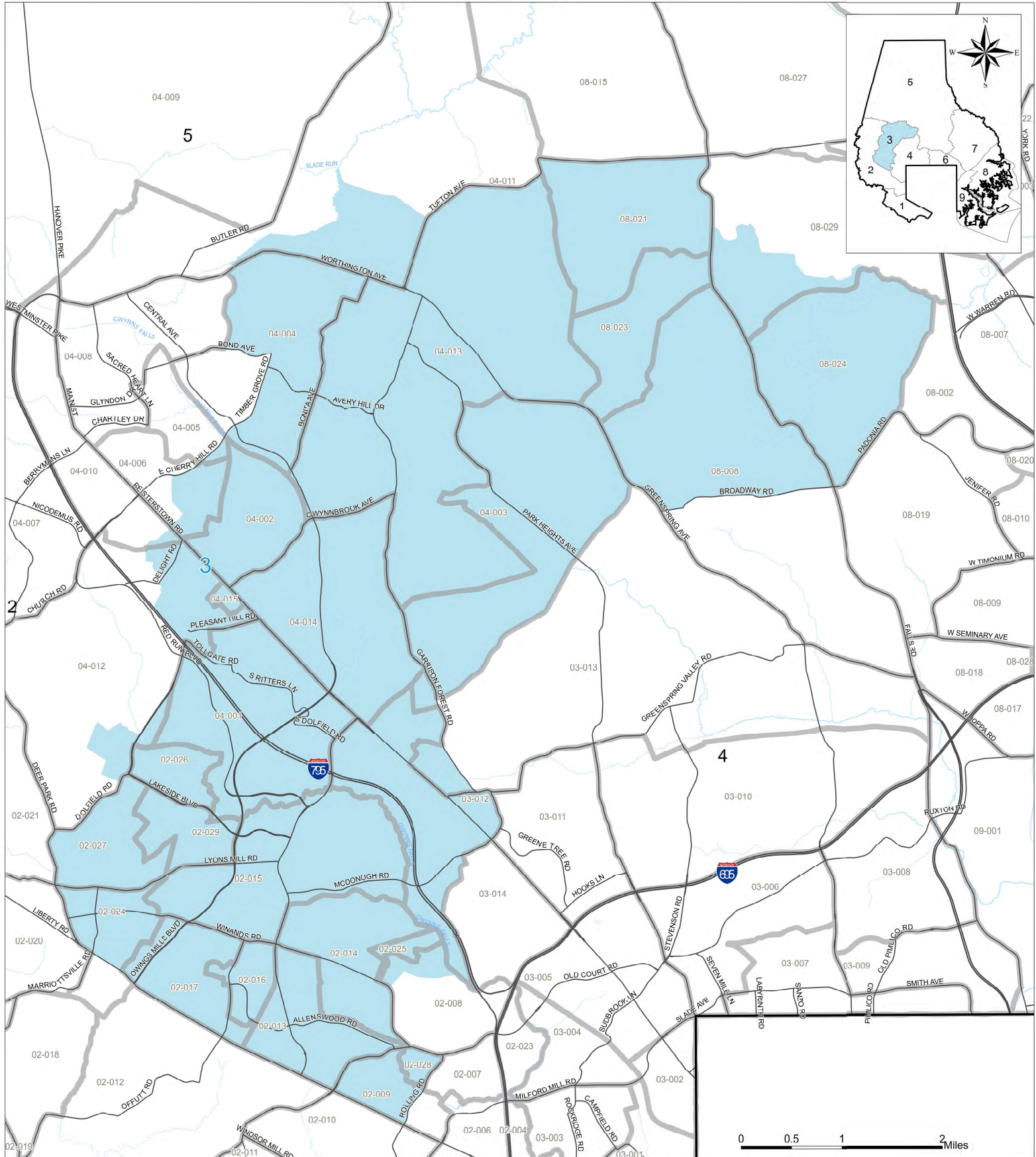
Amendment to Bill 55-25 – Proposed on September 9, 2025.
 Bill Introduced on August 4, 2025
 Map Prepared by Baltimore County Office of Information Technology – GIS Services
 On behalf of the Baltimore County Council
 Prepared on: September 9, 2025 using Esri Redistricting Solution



Proposed Map Amendment

Bill 55-25 - Proposed 2026 Councilmanic Districts

District 3



LEGEND

- Major Roadways
- Voter Precinct
- 00-000 Precinct Number
- Councilmanic District 3

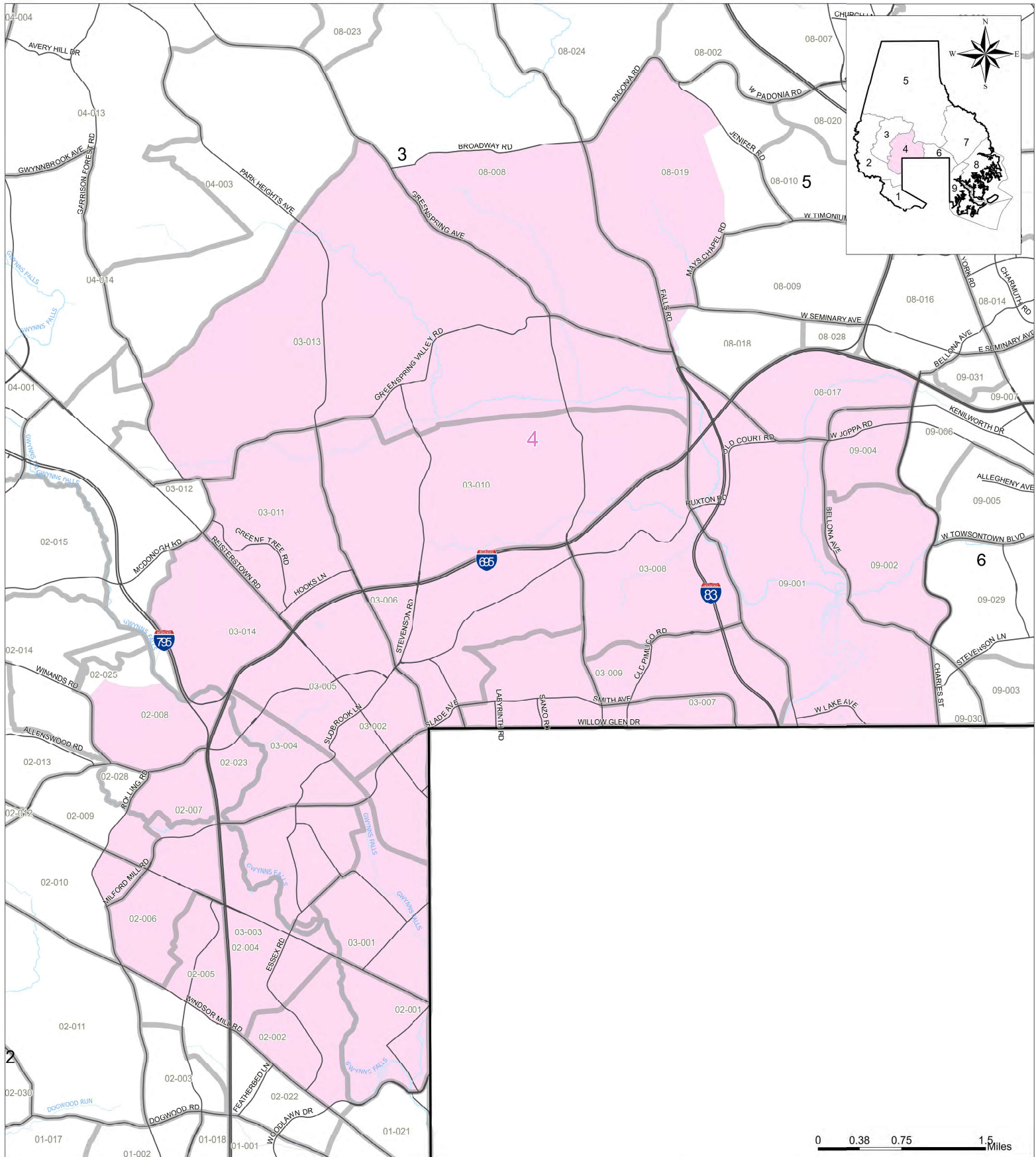
Amendment to Bill 55-25 – Proposed on September 9, 2025.
 Bill Introduced on August 4, 2025
 Map Prepared by Baltimore County Office of Information Technology – GIS Services
 On behalf of the Baltimore County Council
 Prepared on: September 9, 2025 using Esri Redistricting Solution



Proposed Map Amendment

Bill 55-25 - Proposed 2026 Councilmanic Districts

District 4



Amendment to Bill 55-25 – Proposed on September 9, 2025.
 Bill Introduced on August 4, 2025
 Map Prepared by Baltimore County Office of Information Technology – GIS Services
 On behalf of the Baltimore County Council
 Prepared on: September 9, 2025 using Esri Redistricting Solution

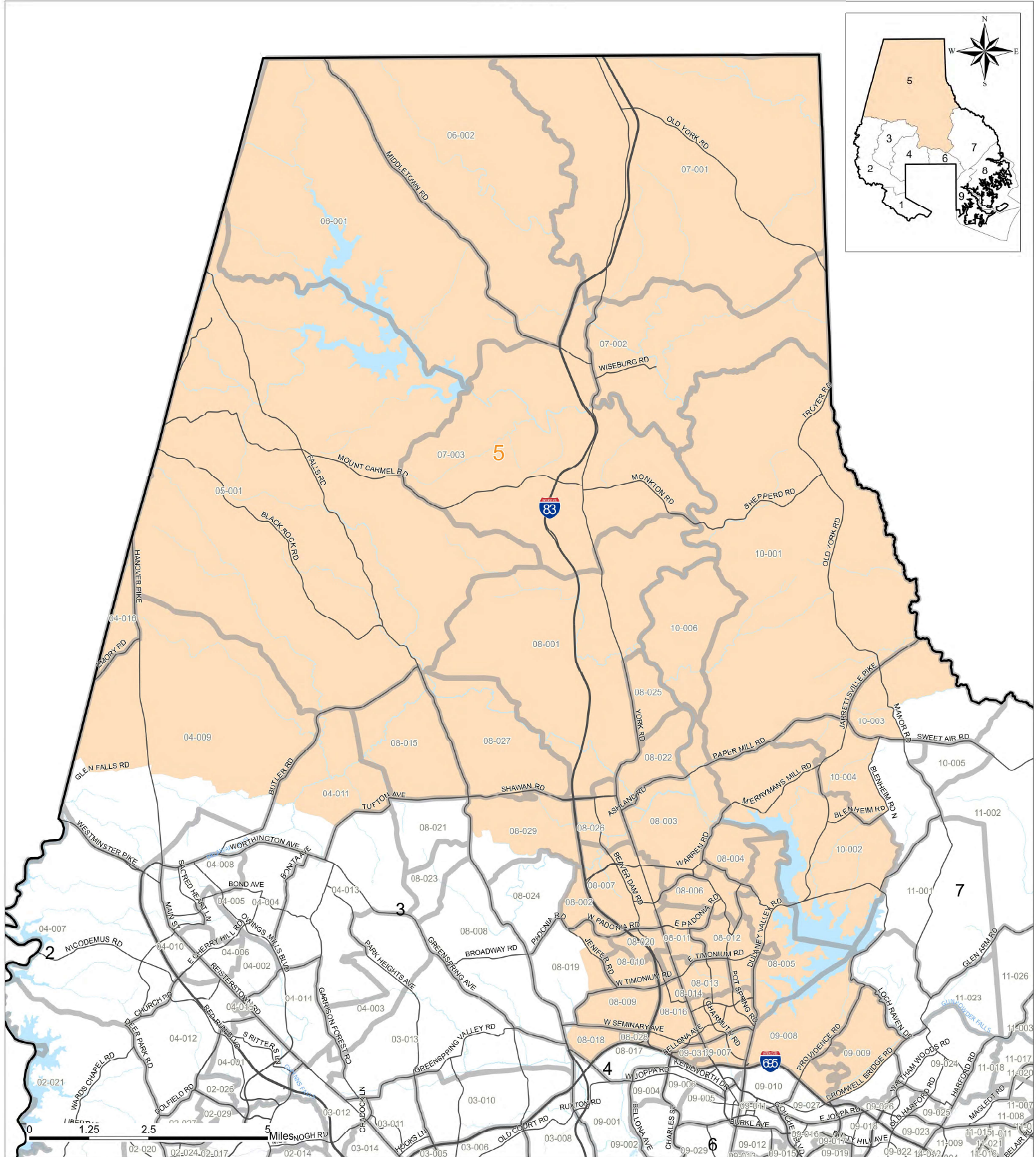
LEGEND

- Major Roadways
- Voter Precinct
- 00-000 Precinct Number
- Councilmanic District 4

Proposed Map Amendment

Bill 55-25 - Proposed 2026 Councilmanic Districts

District 5



LEGEND

- Major Roadways
- Voter Precinct
- Precinct Number
- Councilmanic District 5

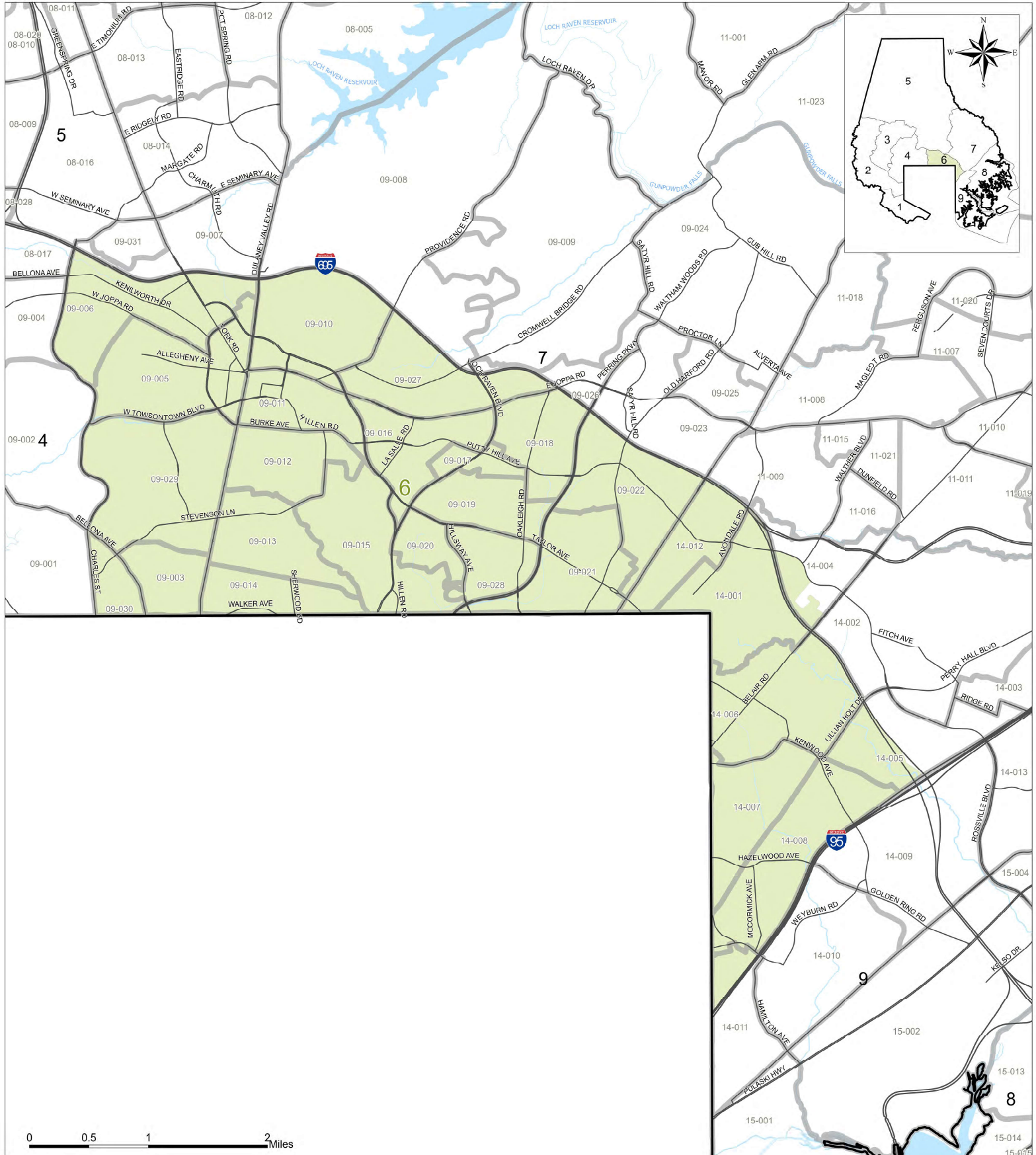
Amendment to Bill 55-25 – Proposed on September 9, 2025.
 Bill Introduced on August 4, 2025
 Map Prepared by Baltimore County Office of Information Technology – GIS Services
 On behalf of the Baltimore County Council
 Prepared on: September 9, 2025 using Esri Redistricting Solution



Proposed Map Amendment

Bill 55-25 - Proposed 2026 Councilmanic Districts

District 6

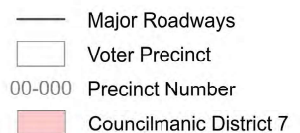
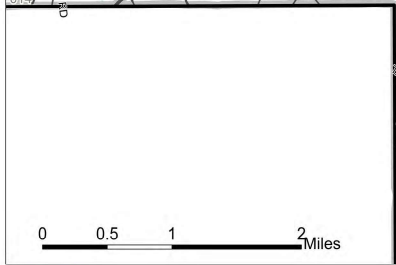
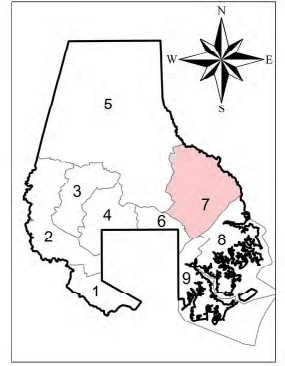


Amendment to Bill 55-25 – Proposed on September 9, 2025.
 Bill Introduced on August 4, 2025
 Map Prepared by Baltimore County Office of Information Technology – GIS Services
 On behalf of the Baltimore County Council
 Prepared on: September 9, 2025 using Esri Redistricting Solution

LEGEND

- Major Roadways
- Voter Precinct
- 00-000 Precinct Number
- Councilmanic District 6

The map displays the City of Raleigh, North Carolina, with its boundaries highlighted in light blue. The city is situated in the central part of the state, bordered by Wake County to the north and east, and Johnston County to the south. Major roads such as I-85, I-95, and I-40 are shown, along with numerous local streets. Water bodies like Lake Johnson and Lake Norman are also depicted. A scale bar at the bottom left indicates distances up to 2 miles. An inset map in the top right corner provides a broader geographical context, showing the city's location within North Carolina and its proximity to the Atlantic Ocean.



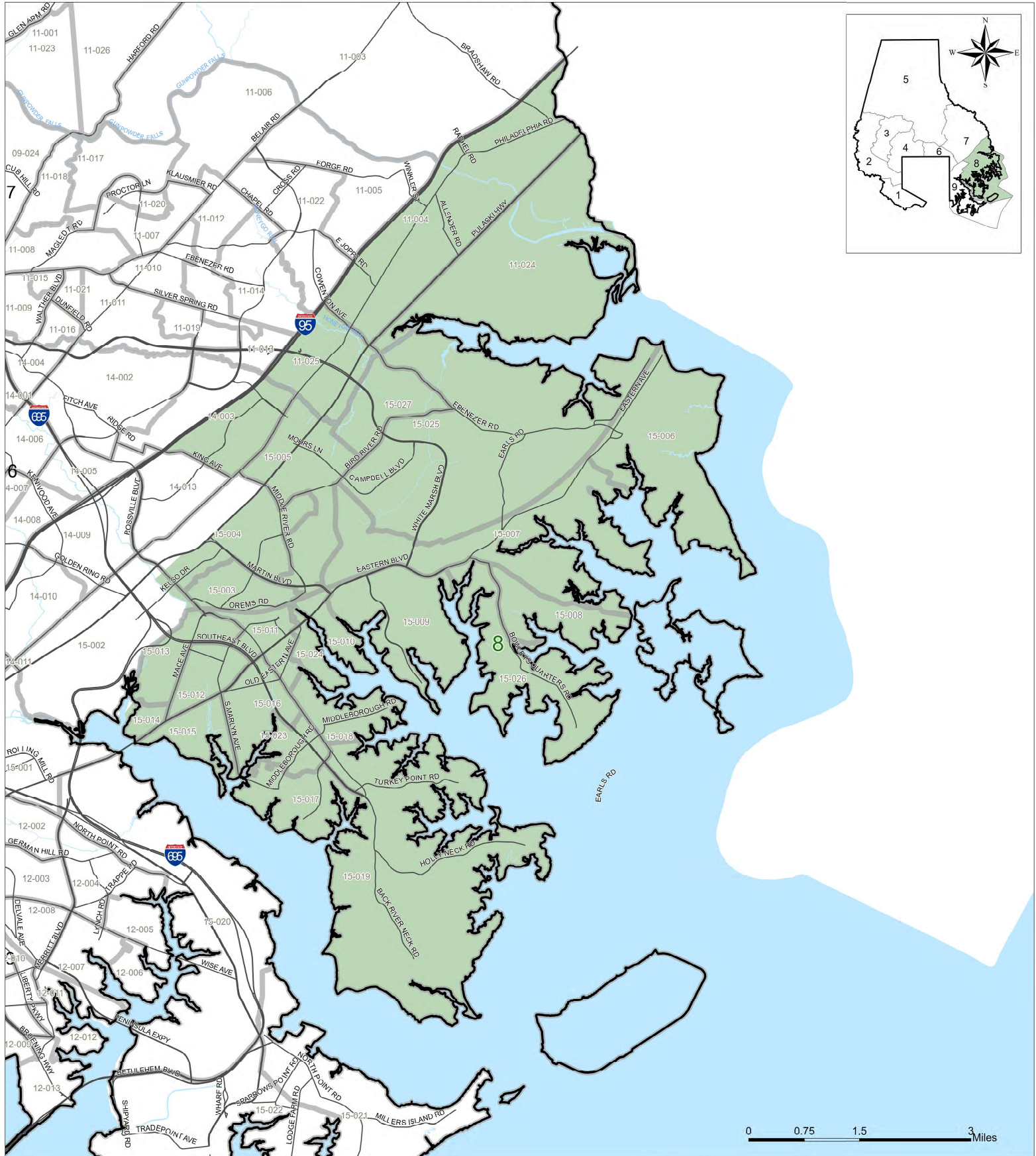
Amendment to Bill 55-25 – Proposed on September 9, 2025.
Bill Introduced on August 4, 2025
Map Prepared by Baltimore County Office of Information Technology – GIS Services
On behalf of the Baltimore County Council
Prepared on: September 9, 2025 using Esri Redistricting Solution



Proposed Map Amendment

Bill 55-25 - Proposed 2026 Councilmanic Districts

District 8



Amendment to Bill 55-25 – Proposed on September 9, 2025.
 Bill Introduced on August 4, 2025
 Map Prepared by Baltimore County Office of Information Technology – GIS Services
 On behalf of the Baltimore County Council
 Prepared on: September 9, 2025 using Esri Redistricting Solution

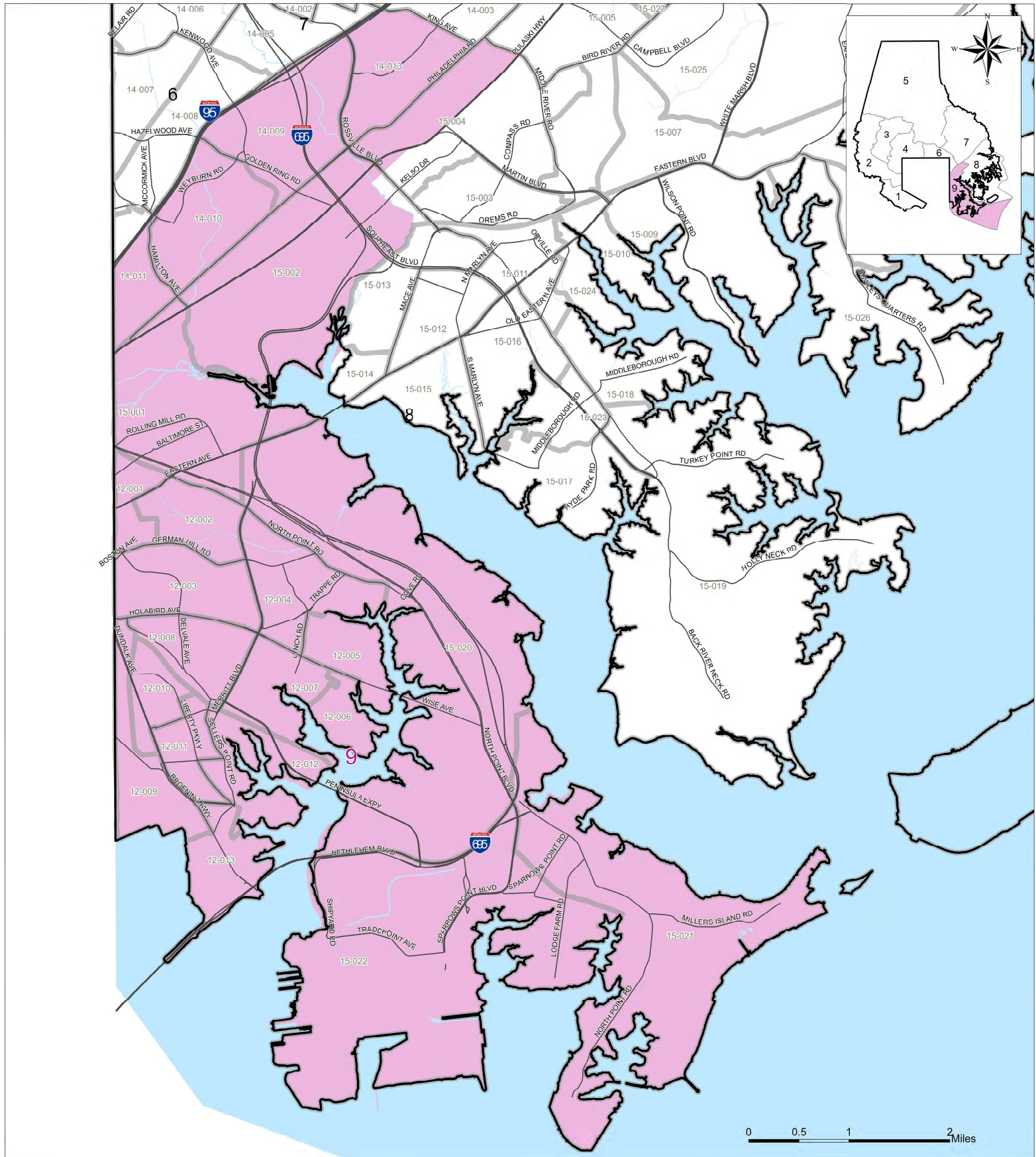
LEGEND

- Major Roadways
- Voter Precinct
- Precinct Number
- Councilmanic District 8

Proposed Map Amendment

Bill 55-25 - Proposed 2026 Councilmanic Districts

District 9



LEGEND

- Major Roadways
- Voter Precinct
- 00-000 Precinct Number
- Councilmanic District 9

Amendment to Bill 55-25 – Proposed on September 9, 2025.
 Bill Introduced on August 4, 2025
 Map Prepared by Baltimore County Office of Information Technology – GIS Services
 On behalf of the Baltimore County Council
 Prepared on: September 9, 2025 using Esri Redistricting Solution

